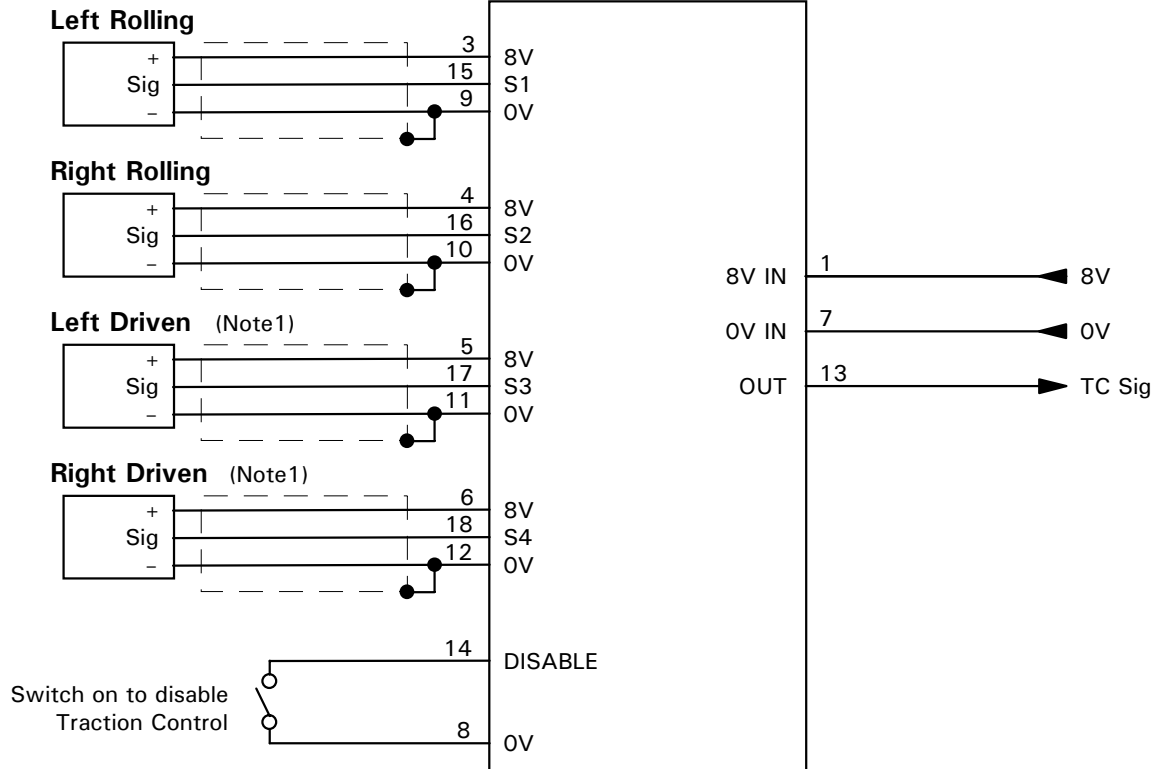


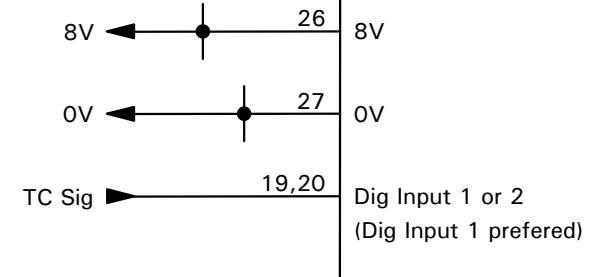
Wheel Speed Sensors

(Hall Type eg. GT101)

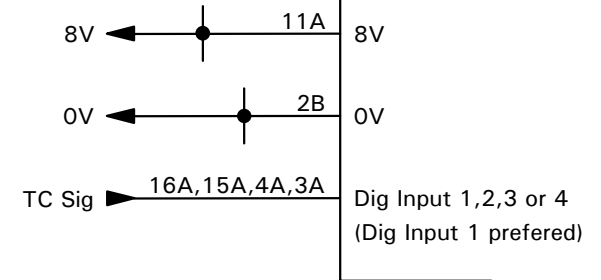
TC Mux - Hall



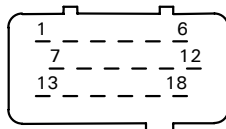
M4 ECU



M8 ECU



Software Version	M4 : V3.9 or higher	M8 : V4.1 or higher
-------------------------	---------------------	---------------------



IMPORTANT
Maximum wiring distance between TC Mux and ECU 500mm

Note 1
For locked diff use one driven wheel sensor connected to both pin 17 and pin 18

Setup	Digital Input Function	TC Mux
	Digital Input Parameters	Rolling Wheel Cal Driven Wheel Cal
	Traction Control Parameters	Rear Wheel Balance Slip Source = TC Mux