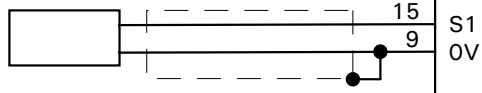


Wheel Speed Sensors

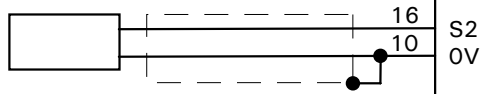
Magnetic Type (Note 2)

Wire for Falling Trigger

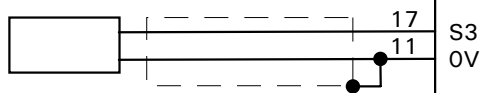
Left Rolling



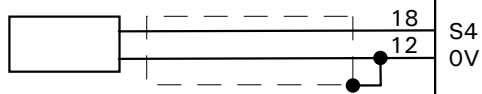
Right Rolling



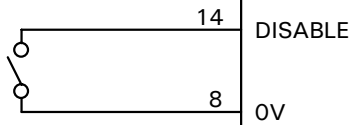
Left Driven (Note1)



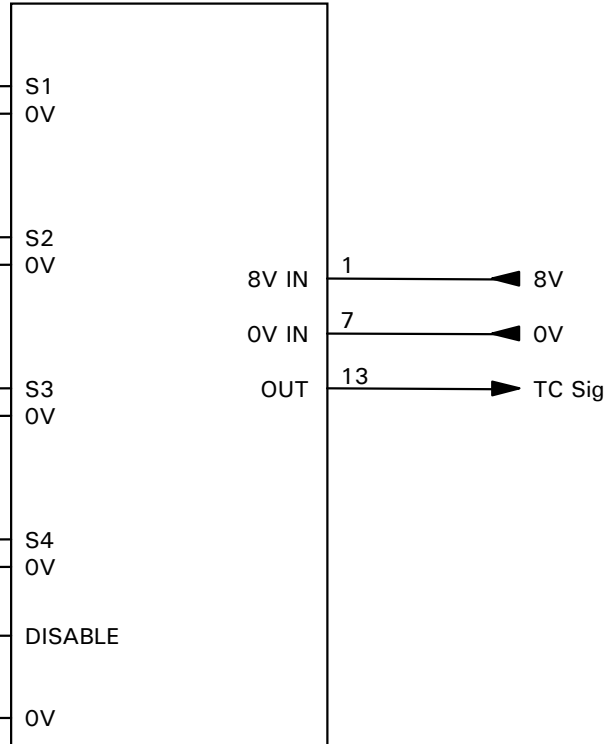
Right Driven (Note1)



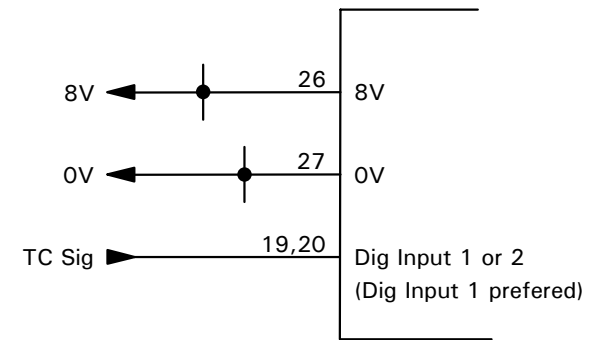
Switch on to disable
Traction Control



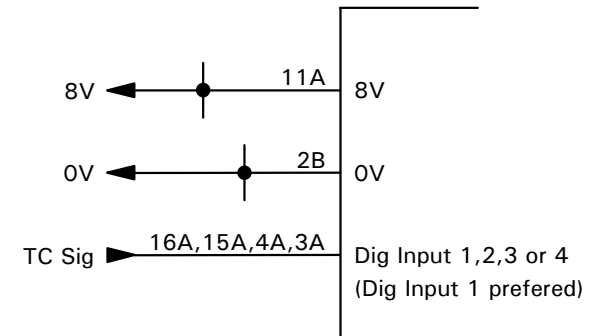
TC Mux - Mag



M4 ECU



M8 ECU



Note 1

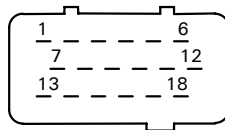
For locked diff use one driven wheel sensor connected to both pin 17 and pin 18

Note 2

The sensor output voltage must exceed 3V before the TC Mux will operate correctly.

The sensor voltage increases with increasing speed. Correct operation will not occur until a high enough speed is reached.

It is preferable to use a Hall type sensor where possible as Hall sensors operate correctly down to zero speed.



Software Version

M4 : V3.9 or higher

M8 : V4.1 or higher

IMPORTANT

Maximum wiring distance between TC Mux and ECU 500mm

Setup

Digital Input Function	TC Mux
Digital Input Parameters	Rolling Wheel Cal Driven Wheel Cal
Traction Control Parameters	Rear Wheel Balance Slip Source = TC Mux

MoTeC

Title **MoTeC TC Mux - Magnetic**

Date 8/12/1995

Drawn TW

App

Rev C

Sheet No

Mag

Drawing No

A01